



Build your business to fund your fun

Partner.Co **Lifestyle** Rewards





Your Lifestyle Partner

When you build a business with Partner.Co, you get rewarded beyond commissions and bonuses.

Earn Lifestyle Credits (LCs) when you build your business and grow your team.

Then, cash them in!

Dream
Destinations



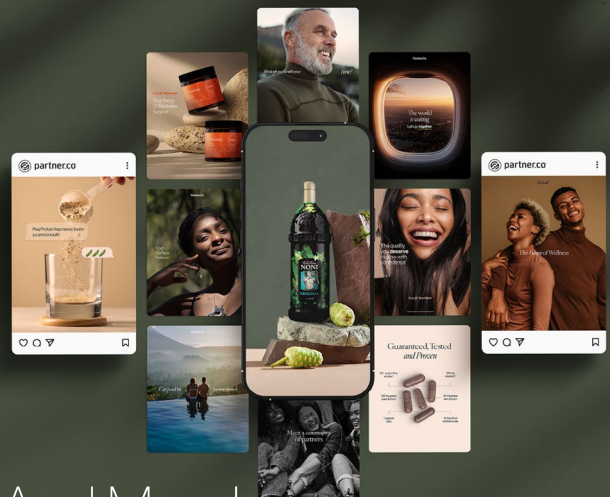
Unforgettable
Experiences



Energising
Events



Partner.Co
Products



And More!

How to Earn

Pay Line Volume Growth (PLV)

Earn 25,000 LCs for every 5,000 PV you grow on your Pay Line(s) over the previous six-month period (compares the second half of the year with the first half).

This is inclusive of volume that may pay you in Base Commissions AND volume that may pay you in New Volume Bonus. You can easily check your progress with the Pay Line Volume Growth Tracker in your Back Office (Lifestyle Hub > Track Progress > My PLV Growth Tracker). Every week that the required growth of 5,000 PV is detected, you receive 25,000 LCs. Since the PLV growth is cumulative, on the weeks the threshold is not reached, the growth detected will still count towards the total PLV for the next commission periods.

Acquiring New Customers & New Brand Partners

Earn one (1) credit for every Point Value (PV) of product that you sell to your personally sponsored Customers and Brand Partners within their first four (4) weeks.

Achieving Your Business Level

Earn LCs for achieving a given Business Level in your first four (4) weeks.

Business	500 LCs
Elite	1,500 LCs
Ultimate	3,000 LCs





Ordering Products Each Cycle

During your first six months in the business, you can qualify for LCs based on consecutive four-week cycles in which you meet the qualifying volume (100 PV on your qualification week).

The week you reach Activated with 200 PV starts your first four-week qualification cycle but does not award LCs. After this first cycle, you'll need to qualify again with 100 PV in your qualification week (from personal and/or customer orders) to earn one LC for each product PV personally purchased during that qualification week. This marks your second consecutive four-week qualifying cycle.

For each additional consecutive qualifying cycle, your LC multiplier increases:

1x in your second consecutive cycle (as specified above)

2x in your third

3x in your fourth

4x in your fifth

5x in your sixth

If you miss a cycle, the multiplier resets back to 1x. You can qualify for up to five consecutive cycles within your first six months, allowing you to earn up to a 5x multiplier.

Advancing Your Title

Earn one (1) credit for every Pay Line Volume (PLV) point required to advance to a new Title.

Every Title has a corresponding PLV requirement (i.e., 13,334 total PLV to achieve Senior Officer).

When you advance your Title, you will receive LCs equal to the PLV required.

Earning at Your Title

Earn LCs each time you generate the minimum PLV associated with your new Title. You'll receive LCs equal to 25% of the total PLV required to achieve the Title.

When you advance to your new Title and then maintain the same total PLV associated with your new Title again, you will receive 25% of the PLV requirement (up to 13,334 per line). You can re-earn these LCs each week you maintain this requirement, within the calendar year.

Attending Corporate Events

Earn ten (10) credits for every “dollar” (USD equivalent) paid on corporate event tickets. These LCs will be added to your account only after the event and only if you attended.

Partner.Co Share™

Earn LCs for completing sections in the “Learn” section of Partner.Co Share. You’ll receive 20 LCs for each Onboarding lesson you complete and because training and personal development is key to both individual and team growth, this is the gift that keeps on giving.

Power Ranking

The regional Top Power Rankers receive additional LCs at the beginning of the year in recognition of their achievement. The number of Top Power Rankers and credits awarded will vary by each region’s sales/revenue in the previous year.

Update Frequency

1. **Pay Line Volume Growth** — updates weekly, awarded every 5,000 PV of growth accrued
2. **Acquiring New Customers & New Brand Partners** — updates weekly, awarded weekly
3. **Achieving Your Business Level** — updates weekly, awarded weekly
4. **Ordering Products Each Cycle** — updates every four weeks, awarded every four weeks
5. **Advancing Your Title** — updates in real time, awarded weekly
6. **Earning at Your Title** — updates in real time, awarded weekly
7. **Attending Corporate Events** — awarded after attending the event
8. **Partner.Co Share™** — updates weekly, awarded weekly
9. **Power Ranking** — updates annually in January for the previous year



Partner.Co Lifestyle Rewards FAQ

What is Partner.Co Lifestyle Rewards?

Partner.Co Lifestyle Rewards is a loyalty programme unique to Partner.Co that rewards Brand Partners for building their business with Lifestyle Credits (LCs). Brand Partners can work towards rewards outside their paycheck and cash LCs in on amazing rewards, including trips, events, experiences, Partner.Co products and more.

How do I view my LCs?

View your current LC balance in your Back Office by selecting “Lifestyle Hub” in the left-hand menu.

If I redeem LCs for a Partner.Co product gift card, how do I use the gift card?

When you redeem for a Partner.Co product gift card, the funds will be transferred directly into your eWallet. These funds can only be spent on the Partner.Co shop using your eWallet.

Can I redeem LCs for Partner.Co Travel?

Yes, you can redeem LCs for Partner.Co Travel at rewards.partner.co. Each trip will have an RSVP period during which you'll need to redeem your ticket(s) and complete the checkout process.

Why are my available LCs lower than before, with nothing new showing in my Transaction History?

LCs are only available to Brand Partners who are commission qualified. If you lose your qualification, you also lose access to your LCs. When you become qualified again, your LC balance will restart from zero.

Why does my Credits Available show zero when I have credits in my Earning History?

1. You've spent your available credits. Check your Transaction History to verify your spending.
2. You're not commission qualified. If you lose your commission qualification, your LCs will be flushed from your account.

Why do I have a negative number of credits?

Product returns made by yourself or your Customers can result in a negative LC balance in your account. This is especially common if you've redeemed LCs during the same week that product returns were processed on your account.

Once I've redeemed a trip, can I cancel my ticket(s)?

Partner.Co Travel cancellations are subject to individual destination Terms and Conditions. Depending on when you cancel relative to the destination's deadlines, you may face no penalty, lose some LCs or forfeit 100% of the LCs redeemed for that trip.

Can I redeem LCs for a trip that is occurring in a different market than my own?

Availability varies per trip. See your eligible destinations at rewards.partner.co or contact your local team for more information on specific trip availability and requirements.

Why aren't the LCs from my event ticket purchase showing in my account?

The LCs earned for purchasing event tickets will only be awarded after the event and only if you have attended.

