

mastercard  
foundation



**MASTERCARD FOUNDATION**  
**SCHOLARS PROGRAM HANDBOOK**  
**2026**

---

# TABLE OF CONTENTS

<b>Welcome Message from the Mastercard Foundation Scholars Program Leadership</b>	<b>03</b>
About the Mastercard Foundation	04
Our Vision	04
Our Mission	04
Our Shared Values	04
<b>Charitable Purpose</b>	<b>05</b>
Strategic Framework	05
Our Programs	06
Our Research	06
About the Mastercard Foundation Scholars Program	07
Impact Stories: Knowing Yourself is the Beginning of Learning — Akpene Diata Hoggar	08
History of the Mastercard Foundation Scholars Program	09
Impact Stories: Championing Girls' Education in South Sudan — Dorcus Maloney	10
Our Approach	11
Impact Stories: A Decade of Sustainable Agriculture Impact — Shamir Carrillo	12
Coverage and Support Areas	14
Please Note	15
Impact Stories: From Vision to Venture — Empowering Africa's Entrepreneurs Through Internships	17
<b>Transformative Leadership, Engagement, and Community Building</b>	<b>18</b>
Transformative Leadership	19
The Mastercard Foundation Scholars Council	20
Term and Membership	20
Roles and Responsibilities	21
<b>Baobab Summit</b>	<b>22</b>
Overview	22
Baobab Platform	24
Offerings	24
Baobab Ambassadors Role	24
Baobab Alumni in Residence Fellowship	25
Give Back	26
Impact Stories: Saving Mothers, Changing Futures in Senegal - Sala Sow	27
<b>Mental Health and Wellbeing</b>	<b>28</b>
Your Well-Being	29

Self-Care and Peer Support	30
Wellbeing Support Partner: Solid Minds	32
About Solid Minds	32
Services Offered	33
Safeguarding	34
Raising Concerns	34
How to Contact the Mastercard Foundation	34
Financial Well-Being	35
Resources	35
Additional Resources	35
Baobab Resources	36
<hr/>	
Impact Stories: Motivated by Contributing to Health Equity and Systems Strengthening — John Bok Chol	37
<hr/>	
<b>Transitions</b>	<b>38</b>
Pillar 1: Workforce Development	39
Pillar 2: Entrepreneurship Support	43
<hr/>	
<b>Community, Networking, and Mastercard Foundation Scholars Program Alumni Engagement</b>	<b>46</b>
Building and Sustaining Networks	46
About the Mastercard Foundation Alumni Network	46
Building Mastercard Foundation Scholars Program Alumni Communities and Impact Networks (Bac-In) Program	48
Mastercard Foundation Alumni Network Chapters	48
About the Mastercard Foundation Alumni Network	49
Mastercard Foundation Alumni Network Structure	49
Country Chapters	49
<hr/>	
<b>Management Information System (MIS)</b>	<b>50</b>
The Data we Collect Includes	51
Informed Consent and Data Subject Rights	52
<hr/>	
<b>Mastercard Foundation Brand Guidelines</b>	<b>53</b>
Frequently Asked Questions	56
<hr/>	
<b>Conclusion and Way Forward</b>	<b>57</b>
Call to Action: Lead the Way	58
Use Your Voice for Good	58
Transformative Leadership in Action	58
Looking Ahead	59

# WELCOME MESSAGE FROM ADRIAN BUKENYA

The Senior Director of the Mastercard Foundation Scholars Program



**ADRIAN BUKENYA**

Dear Mastercard Foundation Scholar,

Welcome to the Mastercard Foundation Scholars Program. It is a joy and privilege to welcome you into this vibrant and inspiring community of young leaders from across Africa and beyond.

Our work is guided by the values of humility, listening, kindness and respect, co-creation, and impact. We believe you embody the same values as the Mastercard Foundation and that you belong here. As a Mastercard Foundation Scholar, you are now part of a global movement, one of the largest programs of its kind in the world. This is a powerful testament to your academic potential, leadership, courage, and unwavering commitment to creating positive change in the world.

This handbook is your guide as you begin or continue your journey. Inside it, you will find information about academic support, leadership development, mental health and wellbeing, safeguarding, and transitions to the world of work.

You will also learn about your role within the growing Mastercard Foundation Scholars Program Alumni Network. It is a reminder that you are not alone. The Mastercard Foundation works with institutional teams who support you on campus, they provide resources to help you succeed, and they create linkages to a global network.

We know that your path will include moments of both challenge and growth. That is part of what makes this journey transformational. You will be encouraged to ask questions, build new skills, step into leadership roles, and embrace the responsibilities that come with delivering solutions to the communities you are part of. You will also be reminded that your health, wellbeing, story, and experiences matter. We want you to flourish in every sense: academically, emotionally, socially, and professionally. As you thrive and give back, so will many others. From this moment on, your actions, voice, and leadership will help shift systems, open doors, and build futures, not just for yourself, but also for communities.

The Mastercard Foundation's vision is to enable 30 million young people in Africa to transition into dignified and fulfilling work by 2030. You are at the heart of that vision. Welcome once again to the Mastercard Foundation Scholars Program. We celebrate you and wish you every success as you embark on this transformative journey of growth, discovery, and achievement.

# ABOUT THE MASTERCARD FOUNDATION

The Mastercard Foundation is a registered Canadian charity and one of the largest foundations in the world. It works with visionary organizations to advance education and financial inclusion to enable young people in Africa and Indigenous youth in Canada to access dignified and fulfilling work. Its Young Africa Works strategy aims to enable 30 million young people to access dignified and fulfilling work by 2030, while its EleV strategy will support 100,000 Indigenous youth in Canada to complete their education and transition to meaningful work aligned with their traditions, values, and aspirations. Established in 2006 through the generosity of Mastercard when it became a public company, the Mastercard Foundation is an independent organization. Its policies, operations, and program decisions are determined by its Board of Directors and Leadership team.



## OUR VISION

We seek a world where everyone has the opportunity to learn and prosper.



## OUR MISSION

To advance youth learning and financial inclusion to catalyze prosperity in developing countries and to support indigenous youth in Canada.

## OUR SHARED VALUES

The Mastercard Foundation Scholars Program is built on values that guide our community and help define the kind of leaders we seek to become:



**Humility:** Stay grounded. Avoid boasting about your scholarship or living beyond your means. True leadership is rooted in humility.



**Co-creation:** Your diversity is your strength. Collaborate, listen, and create together.



**Kindness and respect:** Your diversity is your strength. Collaborate, listen, and create together.



**Impact:** Reflect on your journey. What positive change have you contributed to your community, campus, or continent?



**Listening:** Listen with intention. Learn continuously. Use those insights to grow as a person and as a leader.

# CHARITABLE PURPOSE

The Mastercard Foundation's Charitable Purposes are:

## **The Advancement of Education:**

To establish, operate, and provide programs and services to help children and young people access education, understand and use technology, and develop the skills necessary to succeed in a diverse and global workforce.

## **The Relief of Poverty:**

To establish, operate, and provide microfinance programs and services to young people facing economic barriers and communities to economically enhance and develop entrepreneurs as a means of relieving poverty.

# STRATEGIC FRAMEWORK

The Mastercard Foundation's strategic framework is centred around two main strategies: Young Africa Works and EleV.

- **Young Africa Works:** Young Africa Works is the Mastercard Foundation's strategy to enable 30 million young people in Africa, to access dignified and fulfilling work by 2030, with a focus on young women, refugees and displaced persons, and young people living with disabilities.
- **EleV:** In Canada, our goal is for education and employment systems to be transformed to enable 100,000 Indigenous young people to access post-secondary education and transition to meaningful livelihoods by 2030, driving lasting impact in their communities and across Canada.

In March 2018, the Mastercard Foundation launched its new strategy, Young Africa Works. Click [here](#) to learn more about it.

## OUR PROGRAMS

The Mastercard Foundation works with over 500 partners in Africa and Canada and beyond to develop and implement programs that support young people's pathways through education and access to dignified and fulfilling work.

Through our Young Africa Works strategy, we work to advance education and financial inclusion to catalyze prosperity for young people in Africa, particularly young women, refugees and displaced persons, and young people living with disabilities.

Our programming seeks to: improve the quality of education and vocational training to equip young people with the skills employers need; leverage technology to expand access to, and the quality of, education and digital literacy; and enable entrepreneurs and small businesses to expand through access to financial services.

## OUR RESEARCH

### SHARING KNOWLEDGE AND EVIDENCE TO DRIVE GREATER IMPACT

Together with our partners, the Mastercard Foundation generates learning briefs, research reports, and other knowledge products that inform our work and support our vision and mission.

Our research elevates the voices of diverse youth by spotlighting their lived experiences and viewpoints, particularly those of young women, young people living with disabilities, displaced persons, and, in Canada, Indigenous youth. Our approach focuses on strengthening knowledge ecosystems in the areas where we work, and on integrating Indigenous ways of knowing that deepen our understanding.

Click [here](#) to view our reports.

# ABOUT THE MASTERCARD FOUNDATION SCHOLARS PROGRAM

The Mastercard Foundation Scholars Program is a global initiative designed to develop the next generation of transformative leaders by enabling highly talented, service-oriented young people to pursue higher education and cultivate their leadership potential.

We envision a transformative network of young people and institutions driving inclusive and equitable socio-economic change in Africa.

We work with education institutions, NGOs, and the Mastercard Foundation Scholars community to create the conditions that will enable young people to attain inclusive and relevant education, transition smoothly into dignified and fulfilling work, and lead transformative lives.



# IMPACT STORIES



## KNOWING YOURSELF IS THE BEGINNING OF LEARNING — AKPENE DIATA HOGGAR

Akpené was born and raised in Akatsi in Ghana's Volta Region. At 18, she moved to Accra to attend Ashesi University, beginning a journey that combined education, entrepreneurship, and self-discovery. After completing her undergraduate studies in 2016, she taught social entrepreneurship at a football academy, an experience that deepened her interest in Information Technology (IT). Inspired, she founded Creatives Anonymous Africa, a consulting company aimed at building a digital platform for creative entrepreneurs. Although the venture failed, it taught her vital lessons about understanding community needs and co-creating solutions rather than working in isolation.

At CMU-Africa, Akpené's exposure to advanced technology and a vibrant Mastercard Foundation Scholars program community reignited her entrepreneurial drive. With faculty mentorship and peer support, she began building a new startup that develops digital tools to help entrepreneurs test, refine, and scale their ideas. By combining technical expertise with user insight, she aims to create a platform that supports growth and fosters resilience. She encourages prospective Mastercard Foundation Scholars to believe in their own story and remain authentic, crediting her own self-belief as key to joining the Mastercard Foundation Scholars Program.

For Akpené, the blend of what she calls "successful failure," reflection, and supportive environments has shaped her vision. She aspires to equip young Africans with skills, resources, and confidence to be problem solvers, and believes education not only teaches but also broadens horizons and empowers people to imagine more.



## HISTORY OF THE MASTERCARD FOUNDATION SCHOLARS PROGRAM

In 2022, we celebrated the 10-year anniversary of the Mastercard Foundation Scholars Program. Watch this video to hear from **Reeta Roy, former President and CEO** of the Mastercard Foundation, share the history of the Mastercard Foundation Scholars Program.

Video: [Scholars @ 10 Opening Ceremony](#)

You are now a member of a large, diverse and amazing community. There are more than 41,000 Mastercard Foundation Scholars and Alumni effecting change in their communities. Take a few minutes to watch this video of a Mastercard Foundation Scholars Program Alumni share her journey.

[Video: Mastercard Foundation Scholars' Voices: Hon. Engr. Patricie Uwase on the Power of Possibility Video](#)



# IMPACT STORIES



## CHAMPIONING GIRLS' EDUCATION IN SOUTH SUDAN — DORCUS MALONEY

Growing up in Bor town, South Sudan, but residing primarily in Nyumanzi refugee camp in Uganda, Dorcus knew little about life outside the refugee camp.

Her mother fled to Nyumanzi in 1991 as a young girl, grew up and thereafter married in the camp. After Dorcus's parents divorced she was left in her grandmother's care, pursuing much of her education at the refugee camp. After her seventh year of primary school, she received a scholarship to continue her education. She also spent her time as a volunteer teacher at a primary school. Since the outbreak of war in South Sudan in 2014, Dorcus has called the refugee camp her home.

It was during her time as a volunteer teacher that Dorcus heard about African Leadership University. She applied for and was accepted into the Mastercard Foundation Scholars Program at the Africa Leadership University, Rwanda (ALU-Rwanda).

Today, Dorcus is an advocate for girls' education. She is of the view that it isn't given as much attention as that of boys and so she helps remedy it by helping young people, especially young women, in her community apply for the Mastercard Foundation Scholars Program. She does this through the South Sudan Youth Leadership Scholars Network Program (SSYLN), an initiative founded by Latjor Dak, a Mastercard Foundation Scholar at ALU-Rwanda, that supports young South Sudanese to obtain scholarship opportunities for further studies.

Next on the agenda for Dorcus and her fellow Mastercard Foundation Scholars is organizing an event to share tips with young people on how to apply to the African Leadership University. A major obstacle Dorcus and her fellow Mastercard Foundation Scholars identified is the high cost of English tests, which can be a financial barrier for prospective applicants. She seeks to remedy issues such as these through her work with Dak. She also suggests that schools support students offered scholarships by paying for English tests. Dorcus is optimistic about the future and would like to see refugees like herself work more closely together and support each other.



# OUR APPROACH

The Mastercard Foundation Scholars Program through its university network identifies talented young people facing the highest social and economic barriers to opportunity and those in hard-to-reach communities, primarily in Africa, and supports their higher education and leadership development.

This will support a new era of economic prosperity and African-led growth across the continent.

## OUR EXPECTATIONS

### AS A MASTERCARD FOUNDATION SCHOLAR

It is important that you reflect the values and behaviours consistent with both your university and the Mastercard Foundation Scholars Program. As a Mastercard Foundation Scholar and a member of a community spanning university campuses around the world, you embody the values of transformative leadership.

### AS A STUDENT

It is critical to follow the rules and regulations of your university. Some university partners also have specific policies and protocols for Mastercard Foundation Scholars. Make sure to learn about all the policies and protocols that support you and govern your conduct both as a student and a Mastercard Foundation Scholar at your university

You are encouraged to not only know your values, but to practice standing up for them respectfully and effectively, even in challenging situations. This means learning to communicate your beliefs with clarity while also listening openly to others. Contribute to creating an environment where doing the right thing and thoughtful dialogue go hand in hand.

# IMPACT STORIES



## A DECADE OF SUSTAINABLE AGRICULTURE IMPACT

### SHAMIR CARRILLO

Ten years after graduating from EARTH University, Shamir Carrillo from Belize, continues to uphold the institution's core values in his work. After earning a degree in Agricultural Sciences, Shamir began his career in the sugarcane industry before managing large mechanized farms and completing a master's in Food Safety and Project Management. Currently, he serves as the Station Manager at Belize's Central Farm Station under the Ministry of Agriculture, where he leads research initiatives to strengthen food security and rural livelihoods. He credits EARTH University's emphasis on learning-by-doing and sustainable practices as instrumental in shaping his career. Shamir remains committed to environmental conservation and climate-smart agriculture, embracing regenerative practices that were taught at EARTH long before they became widely recognized. His story is a testament to the enduring value of sustainability education.



# WE TRUST YOU TO

- Adhere to your institution's rules and regulations: ensure you meet requisite academic requirements and uphold standards of discipline, integrity, and conduct set by your university.
- Respect university protocols. Your first point of contact for any issue, including those related to your scholarship, should be the Mastercard Foundation Scholars Program team at your institution (e.g., the Program Manager or Director). If a matter cannot be resolved at the institutional level, it may then be escalated to the Mastercard Foundation through the appropriate channels.
- Work on your studies and remain in good academic standing, and seek support early if you encounter academic challenges.
- Seek out support services such as tutoring, mentoring, career guidance and counselling, health care, and other support if and when needed.
- Actively attend programs, workshops, and events offered to Mastercard Foundation Scholars at your university.
- Practice leadership in your everyday life: take on new roles and responsibilities; speak out and actively support what you believe in; learn and develop yourself; inspire and influence others to action.
- Give back to others: your family, the Mastercard Foundation Scholars community, the wider community, and society, both while you are a student and after you complete your education.
- Connect with one another. The Mastercard Foundation Scholars community is a powerful source of ideas, support, and strength.

We know this could feel like a lot, but know you are supported by your university, your Mastercard Foundation Scholars Program community, and us at the Mastercard Foundation.

# COVERAGE AND SUPPORT AREAS

The Mastercard Foundation Scholars Program provides financial, psychosocial, and academic support to Mastercard Foundation Scholars.

Support includes, but is not limited to, tuition fees, accommodation, books, health insurance and other academic materials, mentoring, counselling, leadership development, and a return air ticket to the Mastercard Foundation Scholar's country of origin.

## COMPREHENSIVE SUPPORT

- Tuition, student fees, books, and other learning materials
- Accommodation and meals
- Round-trip travel to the host institution and visa support for those studying abroad
- Support services such as tutoring, mentoring, counselling and a dedicated staff team for Mastercard Foundation Scholar support
- Health insurance and other well-being support
- A living stipend, which will vary based on cost of living differences and is determined in collaboration with each partner university
- A laptop computer
- Assistive devices and accommodations for Mastercard Foundation Scholars with a disability

# PLEASE NOTE

Your specific support is determined based on the context of your institution. Various factors are considered, including location, cost of living, university facilities, and specific accommodations that may be required. As a result, there are variations in the package of support available to Mastercard Foundation Scholars across the partner network.

It is important to remember that Mastercard Foundation Scholars cannot hold another scholarship or bursary while studying as a Mastercard Foundation Scholar. Merit prizes and research grants are allowed.



## HOW YOU CAN ACTIVELY PARTICIPATE AND INTERACT WITH US AS A MASTERCARD FOUNDATION SCHOLAR

As a Mastercard Foundation Scholar, there are several ways to stay engaged and connected with the community. Here are some key ways to actively participate:

- Active participation on the [Baobab Platform](#)
- Seek leadership opportunities (e.g., Mastercard Foundation Scholars Council, Mastercard Foundation Alumni chapters)
- Actively participate in Mastercard Foundation Scholar and Alumni surveys
- Engage in transformative leadership activities and upskilling opportunities (e.g. community upliftment)
- Sharing impact stories and opportunities within your networks to tell others about opportunities supported by the Mastercard Foundation
- Plug into the Mastercard Foundation Scholars Program Alumni transition opportunities for post-graduation internships and more



# IMPACT STORIES



## FROM VISION TO VENTURE – EMPOWERING AFRICA'S ENTREPRENEURS THROUGH INTERNSHIPS

A three-month Entrepreneurship-in-Residence internship, delivered by the Mastercard Foundation Scholars Program Associates in partnership with Shasha Network, equipped three emerging Mastercard Foundation Scholars with the tools and confidence to scale their start-ups.

ChipoParadzai (Zimbabwe), expanded her Refined Hearts mentoring platform to 205 weekly participants, created an investor-ready pitch deck, and grew her online reach by 68 percent.

Marybeth Ubanwa (Nigeria), used the internship to boost Stedify, her budget-nutrition venture growing Facebook followers from 600 to 5,000+ and building a 165-member WhatsApp community after hosting a public webinar.

Desire Amevi Isidore Hounnigbe (Benin), revitalised Language Elite by translating 23,000+ words and multimedia content into French, landing a £1,400 contract and refining his growth strategy through SWOT and PESTLE analysis. The internship highlights how remote mentorship and pan-African collaboration can turn vision into sustainable venture success.



# TRANSFORMATIVE LEADERSHIP, ENGAGEMENT, AND COMMUNITY BUILDING

The Mastercard Foundation sees transformative leadership as motivating and engaging others in an ethical manner to generate positive and lasting impact on society, through innovation and vision.

The Mastercard Foundation Scholars Program has sought to ensure that academically talented young people on the African continent access high-quality education and are prepared to take their place as next generation leaders supporting social transformation and economic growth in Africa. Towards this goal, the Mastercard Foundation offers support designed to foster transformative leadership by equipping Mastercard Foundation Scholars with knowledge, tools, capacity and motivation to make a difference in their countries and regions of origin in the future.

The Mastercard Foundation has developed a Transformative Leadership Framework with an accompanying diagram to inculcate transformative leadership as an identity; an ethical practice; and a way of contributing to society.

The idea is that Mastercard Foundation Scholars should acquire transformative leadership skills and relevant psycho-social attitudes and competencies to support leadership actions.

Click [here](#) to hear more about the transformative leadership journeys from our past Mastercard Foundation Scholars Council members.

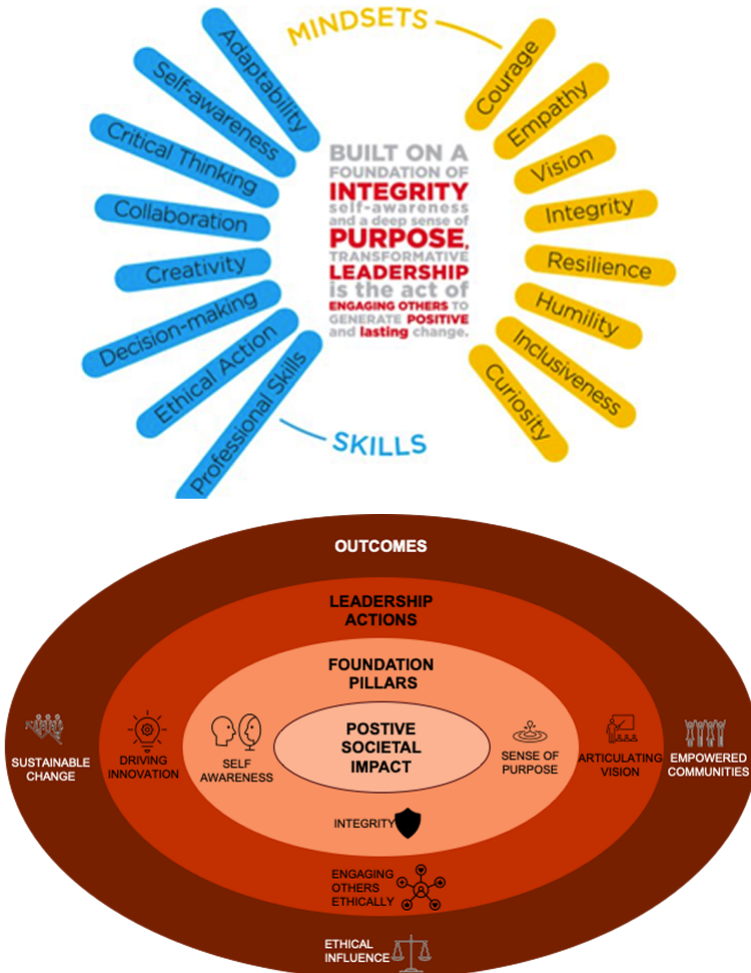


# TRANSFORMATIVE LEADERSHIP COMPETENCY FRAMEWORK

The Mastercard Foundation Scholars Program defines Transformative Leadership (TL) as: Motivating and engaging others in an ethical, manner to generate positive and lasting impact on society, through innovation and vision.

Built on the foundation of integrity, self-awareness and a deep sense of purpose.

While elements of Transformative Leadership cut across different Mastercard Foundation programs, it remains the distinctive feature of the Mastercard Foundation Scholars Program.





## THE MASTERCARD FOUNDATION SCHOLARS COUNCIL

The Mastercard Foundation Scholars Council was created collaboratively by Mastercard Foundation Scholars from participating partner institutions for the purpose of fostering individual and Mastercard Foundation Scholars Program success through active student participation, relationship-building, and the maintenance of strong links with Mastercard Foundation Scholars Program Alumni.

### TERM AND MEMBERSHIP

The Mastercard Foundation Scholars Council is inclusive of representatives from all Mastercard Foundation Scholars Program tertiary partners. Each year, the Mastercard Foundation Scholar student body at each institution elect a representative to the Mastercard Foundation Scholars Council, through an independent election process.

Representatives serve a full calendar year and support the onboarding process of the next representative at the end of their term.

## ROLES AND RESPONSIBILITIES

As a Mastercard Foundation Scholars Council representative, there are several ways to stay engaged and connected with the community. Here are some key ways to actively participate:

### LIAISON ROLE

Act as a liaison between the Mastercard Foundation Scholars, their program managers at their respective institutions, and the Mastercard Foundation.

### ORIENTATION SUPPORT

Support their institutions' Mastercard Foundation Scholars Program offices in welcoming and orienting new cohorts, including facilitating peer mentor–alumni matching with Mastercard Foundation Scholars Program Alumni. Support orientation and welcome activities for new Mastercard Foundation Scholars. This includes liaising with Mastercard Foundation Scholars Program Alumni to participate in orientation activities.

### EVENT PLANNING

Participate in planning events at institutions ranging from Mastercard Foundation Scholars program community-building to give-back initiatives.

### INFORMATION DISSEMINATION

Act as a channel for sharing information between the Mastercard Foundation, Mastercard Foundation Scholars Program managers, and Mastercard Foundation Scholars Program and Alumni, and vice versa. This includes sharing surveys, key dates, opportunities, important updates, questionnaires, and opinion polls.

### FOSTER COLLABORATION

Promote collaboration among members of the Mastercard Foundation Scholars community, including Mastercard Foundation Scholars Program Alumni, by engaging Mastercard Foundation Scholars in their work, i.e., share updates from monthly meetings with fellow Mastercard Foundation Scholars, request their feedback, invite their input in subcommittee work, and co-create community-building and giveback events.

# BAOBAB SUMMIT

## OVERVIEW

The Baobab Summit is the signature event of the Mastercard Foundation Scholars Program. Since 2014, it has convened the Mastercard Foundation Scholars and Alumni, partners and Mastercard Foundation stakeholders to celebrate the Mastercard Foundation Scholars Program community, showcase individual talents, nurture transformative leadership mindsets and skills, and create opportunities for Mastercard Foundation Scholars and Alumni to engage with other Foundation initiatives under platforms such as Young Africa Works.

In addition, the Baobab Summit provides a platform to engage with thought leaders and mentors, while fostering a strong sense of camaraderie and collaboration across the Mastercard Foundation Scholars Program Partner Network as we honor the achievements of Mastercard Foundation Scholars and Alumni.

**FORMAT: 3-DAY IN-PERSON, VIRTUAL OR HYBRID EVENTS.**



## HOW YOU CAN ENGAGE WITH THE BAOBAB SUMMIT

As a Mastercard Foundation Scholar, there are several ways to stay engaged and connected with the community. Here are some key ways to actively participate:

- **Keynote Addresses:** Prominent speakers, including leaders and experts, deliver keynote speeches on themes relevant to the Baobab Summit's focus.
- **Interactive Sessions:** These include workshops, panel discussions, and Ask-Me-Anything sessions during which participants can engage directly with speakers and experts.
- **Networking Opportunities:** Participants can connect with peers, mentors, and professionals, fostering a sense of community and collaboration.
- **Speak Your Mind Challenge:** Speak Your Mind winners have the chance to attend the Baobab Summit, where they are invited to share creative submissions related to the Baobab Summit theme for an opportunity to participate as an MC, speaker, panelist, or roving reporter at the Baobab Summit or pre-summit engagements.

## PARTICIPATION

Participation in the Baobab Summit is typically by invitation, council membership or institutional selection for Mastercard Foundation Scholars and Alumni, and partners. Spots can also be earned through active engagement on the Baobab Platform and challenges (e.g., Speak Your Mind).

## BAOBAB PLATFORM

**Overview:** [The Baobab platform](#) is a vibrant social, professional, and learning community for young African leaders and the larger network of Mastercard Foundation Alumni. The Baobab platform is accessible to all young people.

## OFFERINGS

### Opportunities:

It enables you to access Mastercard Foundation Scholars Program opportunities, internship, and curated career selections worldwide.

### Professional Development:

The platform has a catalogue of professional development courses designed to sharpen your leadership, entrepreneurship, and workforce skills.

### Mentorship:

The Baobab platform offers mentorship opportunities and hosts industry experts who answer trending questions for young African leaders.

### Networking:

You can also connect with a community of like-minded young African leaders who share your interests, passions and experiences through social feeds, webinars, chat groups, and live events to foster continuous learning and collaboration.

## BAOBAB AMBASSADORS ROLE

Baobab Ambassadors are active and engaged members of the Baobab platform who use their leadership, creativity, and social influence to build vibrant, connected communities of Mastercard Foundation Scholars and Alumni. As a Baobab Ambassador, you help create meaningful engagement by encouraging others to participate in discussions, share opportunities, and explore the platform's full potential. This role offers a unique opportunity to lead, grow your network, and contribute to a strong culture of peer learning, collaboration, and shared success across the Mastercard Foundation Scholars and Alumni community.

## BAOBAB ALUMNI IN RESIDENCE FELLOWSHIP

The Baobab Alumni in Residence Fellowship is a stipend-paid fellowship program which offers Mastercard Foundation Scholars Program Alumni a unique opportunity to share their expertise, experiences, and insights with the broader Mastercard Foundation Scholars Program community on the Baobab Platform. Each year, a new cohort of Mastercard Foundation Scholars Program Alumni with specialized knowledge in specific areas is selected to lead and actively contribute to discussions they are passionate about and share insights from their lived experiences and professional journeys to drive meaningful dialogues, inspire learning, and strengthen connections across the Mastercard Foundation Scholars Program Alumni Network.





## GIVE BACK

A vital part of the Mastercard Foundation Scholars Program is the Give Back component, an initiative that gives Mastercard Foundation Scholars the opportunity to be useful to their communities through volunteering as well as other forms of experiential learning. Giving back to the community is thoroughly linked to Transformative Leadership. Through Transformative Leadership skills and mindsets, Transformative Leaders are motivated and able to Give Back to their communities.

# IMPACT STORIES



## SAVING MOTHERS, CHANGING FUTURES IN SENEGAL

### SALA SOW

---

After witnessing the heartbreaking loss of a mother of twins at a rural health center, Sala Sow made it her life's mission to save mothers in underserved communities. Now 22 years old, Sala is in her third year of medical school at Gaston Berger University, where she is supported by the Mastercard Foundation Scholars Program. Since childhood, her dream has always been to succeed in order to support her mother, whom she saw face life's hardships alone after the death of her father when Sala was only three years old.

While pregnant, she earned her science baccalaureate with honors. She became the first girl from her village to reach such a level of academic excellence - a great source of pride for her and her family. Becoming a mother while pursuing her studies has been a daily challenge. To manage her responsibilities, she would wake up every morning at 6 a.m. to study before her son woke up.

But she perseveres - determined to offer him a better future. At university, she was also able to count on the vital support of the student mothers' association. She discovered the Mastercard Foundation Scholars Program through a post aimed at new science graduates. Beyond financial assistance, the Mastercard Foundation Scholars Program has provided her with comprehensive support: leadership training, personal development, confidence building, and public speaking. Her child was also able to enroll in daycare.

Committed and deeply connected to her community, Sala chose to give back through a symbolic gesture: distributing school kits in her home village. She remembers a time when she couldn't always afford a notebook or a pen. Her goal was clear: to show these children that they too can succeed. She also raised awareness among parents about the importance of education, especially for girls.

Today, Sala carries bold ambitions. She dreams of creating a state-of-the-art medical center to meet the needs of all, especially in rural communities where access to healthcare remains limited- particularly for women and children. Her ultimate dream: to become a renowned gynecologist, serving her community.



# MENTAL HEALTH AND WELLBEING

## OVERVIEW

The Mastercard Foundation Scholars Program envisions a new generation of transformative leaders who understand and value mental health and wellbeing. By prioritizing emotional resilience, we support Mastercard Foundation Scholars in becoming catalysts for positive change within their institutions, communities, and beyond. Taking care of yourself and those around you reflects the values of the Mastercard Foundation Scholars Program. Wellbeing is part of leadership. When you prioritize your mental health, you lead with clarity, compassion, and courage.



## YOUR WELL-BEING

There are many aspects of your well-being: financial, physical, emotional, and mental health. Academic and personal goals, no matter how important, cannot be achieved without first attending to your well-being. It is important that you take the lead in ensuring that your well-being is prioritized. This should be in part by practicing healthy behaviours, as well as by seeking care and support services whenever you need them.

Don't forget about your community. You can also play an important role in supporting others who may be experiencing difficulties. Encouraging them to seek care or asking your Mastercard Foundation Scholars Program administrator for help can go a long way. The Mastercard Foundation expects its partners who interact with young people to be committed to ensuring their well-being and protection while they participate in the Mastercard Foundation Scholars Program. All partners working with children and youth need to adhere to the Mastercard Foundation's Child Protection and Youth Protection Guidelines.

Your wellbeing is a core priority of the Mastercard Foundation Scholars Program. We believe that academic achievement and transformative leadership grow from a strong foundation of mental health and emotional resilience. The Mastercard Foundation Scholars Program works with university partners and other trusted partners such as Solid Minds to ensure every Mastercard Foundation Scholar is fully supported.

This includes access to psychosocial services in addition to academic and leadership development.

Wellbeing and Mental health support are integrated throughout your journey, from campus life to transitions to graduation. Through partnerships like the one with Solid Minds, we are creating environments where mental wellbeing is actively supported. Mastercard Foundation Scholars are encouraged to reach out for help when needed. Seeking support is a sign of strength. You are never alone. Please note that wellbeing and counselling services supported by the Mastercard Foundation Scholars Program are only available while you are a student. The specific type of counselling support available differs across institutions. **Contact your institution's Mastercard Foundation Scholars Program team to learn what services are available to you during your studies.**



## SELF-CARE AND PEER SUPPORT

Taking care of your mental health is part of your journey as a Mastercard Foundation Scholar. We encourage all Mastercard Foundation Scholars to take up self-care practices and seek peer support to manage stress and maintain a healthy, balanced lifestyle. Here are some ways to support your wellbeing:



### **Time management and healthy boundaries:**

Plan your days with clear, manageable goals. Break large tasks into smaller steps and take regular breaks, including at least one full lunch break each day. Make time to disconnect from academic work in the evenings and on weekends. Speak with your support team if your workload becomes unmanageable.

### **Relaxation practices:**

Simple techniques like deep breathing, mindfulness, or gentle stretching can ease anxiety. Try to include short relaxation activities during the day, especially during periods of stress.

### **Physical activity, balanced diet and sleep:**

To boost your mood and energy, engage in regular movement, such as walking, cycling and sports. Eat balanced meals that support your body and mind. Try to sleep for seven to nine hours each night, as lack of sleep can increase feelings of stress or sadness.

### **Personal time:**

Make space in your schedule for joy and rest. Reading, listening to music, time in nature, or creative activities can help you recharge. This "me time" is just as important as your study time.

### **Digital tools and resources:**

Explore meditation apps, digital journals, or mental wellness videos. The Baobab platform provides a Wellness Resource Hub, and a Self-Care Toolkit made specifically for Mastercard Foundation Scholars. These tools include activities, articles, and links to local and online services.

Daily self-care practices can strengthen your mental and emotional health. The World Health Organization reminds us that even a few minutes of self-care each day can help build the skills needed to cope with stress. If you ever feel overwhelmed, reach out to Solid Minds or your university's counselling services. You are supported and valued.

Click [here](#) to visit the Wellness Resource Hub for Transformational Leadership & Wellness: Cultivating Wellness Across the 8 Dimensions!





## WELLBEING SUPPORT PARTNER: SOLID MINDS

### ABOUT SOLID MINDS

Solid Minds is a licensed mental health service provider based in Kigali, Rwanda. It is the Mastercard Foundation Scholars Program's official mental health partner in the country. Solid Minds is an independent outpatient clinic, licensed by Rwanda's Ministry of Health, and staffed by local experts. It provides high-quality, evidence-based psychological services tailored to students, families, and working professionals. Solid Minds supports young people in reaching their potential through emotional and psychological wellbeing. Solid Minds is available to all Mastercard Foundation Scholars.

#### Additional Resources:

Website: [www.solidminds.rw](http://www.solidminds.rw)

Email: [christine.uwimana@solidminds.rw](mailto:christine.uwimana@solidminds.rw) or [scholars.program@solidminds.rw](mailto:scholars.program@solidminds.rw)

# SERVICES OFFERED

## SOLID MINDS WORKS WITH THE MASTERCARD FOUNDATION SCHOLARS PROGRAM TO OFFER:

### Individual Support:



Mastercard Foundation Scholars have access to confidential counselling sessions. These one-on-one conversations, available in person or remotely, help address personal challenges, reduce stress, and build emotional resilience.

### Training:



Workshops and learning sessions are provided to Mastercard Foundation Scholars, Mastercard Foundation Scholars Program Alumni, and staff at partner institutions. Training topics include peer support, stress management, emotional awareness, and creating a culture of care.

### Organizational Consultation:



Solid Minds supports partner institutions in strengthening wellness strategies. This includes improving campus-based mental health programs and designing safe and inclusive learning environments.

The work of Solid Minds also contributes to key objectives shared with the Mastercard Foundation Scholars Program: building compassionate campuses, reducing stigma by increasing mental health awareness, improving wellbeing outcomes, and fostering diverse and inclusive higher education institutions. These services ensure that Mastercard Foundation Scholars and Alumni, and partners can promote mental wellness throughout the network.

Solid Minds, the Mastercard Foundation and our university partners ensure your personal information, including requests for mental health and wellbeing support, remain confidential. Solid Minds works with student leaders on campuses to provide peer counselling.

# SAFEGUARDING

The Mastercard Foundation is deeply committed to ensuring that all young people are safe and protected from potential harm and abuse. Safeguarding is a shared responsibility across the entire Mastercard Foundation Scholars Program Network.

This training outlines how to identify and respond to concerns, protect the rights of others, and maintain a respectful and inclusive environment.

Safeguarding principles are embedded into all Mastercard Foundation Scholars Program partnerships and institutional contracts. Everyone is expected to act quickly and responsibly to report concerns and uphold community safety.

## RAISING CONCERNS

**If there are any concerns, please follow the processes at your institution of study. Any concerns should be raised directly with the Mastercard Foundation Scholars Program team at your institution.**

**If you have proof that you have already raised your concern directly with the Mastercard Foundation Scholars Program team at our institution and still need additional support from the Mastercard Foundation, you may follow the steps below:**

- Please visit our website and fill the contact us form [here](#).
- Please file your query under Company Request: Whistle-blower in order to ensure that it reaches the appropriate channels.

**As a Mastercard Foundation Scholar, you also have a role to play in creating a safe, respectful, and inclusive community. This includes looking out for the safety and wellbeing of your fellow Mastercard Foundation Scholars, living within the laws of the country where you are studying, and upholding the Mastercard Foundation's values in all your interactions. Treat others with kindness and respect, even when expressing your opinions or raising concerns. Your actions contribute to a culture where everyone can thrive.**

# RESOURCES FOR WELLBEING

The Baobab platform has the following courses to support your financial wellbeing:

- [Wellness Resource Hub: Financial Wellness](#)
- [Financial Literacy 101: Budgeting](#)
- [Budgeting for the Real World](#)

- Baobab Platform  
Log in to your [Baobab](#) account to access the Wellness Resource Hub and Self-Care Toolkit.
- World Health Organization  
The "[Doing What Matters in Times of Stress](#)" guide offers practical strategies for managing stress. It is available online in multiple languages.





### Baobab Resources

- [Self-Care and Well-Being Tool Kit](#) – This course is an introduction to self-care and explains why it's important.
- [Work Life Balance](#) – This course was created in partnership with Solid Minds and has a module focused on work life balance for students.
- [Resource Hub for Transformational Leadership & Wellness: Cultivating Wellness Across the 8 Dimensions](#) – This resource hub was created by Solid Minds especially for Mastercard Foundation Scholars and is a wealth of resources for each dimension of mental wellness.
- [Budgeting for the Real World](#) – This course was created in partnership with a Young African Leadership Initiative (YALI) Alumni and provides real world tips for Mastercard Foundation Scholars and Alumni on budgeting and savings.

Access the full Baobab Course Catalogue [here](#).

# IMPACT STORIES



## MOTIVATED BY CONTRIBUTING TO HEALTH EQUITY AND SYSTEMS STRENGTHENING

### JOHN BOK CHOL

---

John Bok Chol's journey from displacement to global-health leadership reflects a deep commitment to equity and stronger health systems. Growing up as a young person who is a refugee in Kenya, he faced significant barriers to education and healthcare, experiences that shaped his determination to create long-term solutions for communities facing social and economic barriers.

After completing his medical degree at Moi University, John took on leadership roles supporting South Sudanese students and engaging national stakeholders. Realising that clinical practice alone could not address systemic health challenges, he pursued a Master's in International Health and Tropical Medicine at the University of Oxford through the Mastercard Foundation Scholars Program.

His work with The Global Health Network and Amref International University has contributed to community-engagement research, Mpox outbreak guidance, and a scoping review on genomics and pathogen surveillance across Africa. Today, John continues to champion research equity, health-system capacity building, and evidence-based innovation to improve health outcomes across the continent.



# TRANSITIONS

The transition from university to your next phase can seem daunting. As Mastercard Foundation Scholars, you can access a variety of resources to help you take your next steps to further education, entrepreneurship, and/or employment.

The Mastercard Foundation's Transitions team is dedicated to supporting Mastercard Foundation Scholars and Alumni as they move from education into dignified and fulfilling work, especially opportunities that may be otherwise hard to access. This work is anchored on two strategic pillars: Workforce Development and Entrepreneurship.





## PILLAR 1:

# WORKFORCE DEVELOPMENT



The Mastercard Foundation actively works to prepare Mastercard Foundation Scholars Program Alumni for meaningful participation in the labour market by equipping them with the skills, experience, and support needed to secure dignified and fulfilling work. Mastercard Foundation Scholars and Alumni are supported to access internships, volunteer placements, career coaching, and job placement services, often facilitated through partnerships with employers, educational institutions, and government agencies. This is achieved through the following initiatives:

## I. MASTERCARD FOUNDATION ASSOCIATES PROGRAM

The Mastercard Foundation Associates Program connects bright, highly driven young people, particularly young women, internally displaced young people, and youth living with disabilities to 12-month paid internship. The Associates Program support participants to secure entry level roles with external organizations including Mastercard Foundation Partners to enable them to develop relevant competencies and capabilities in leadership, employability, and basic entrepreneurship knowledge and skills to help them thrive in their chosen careers.

Eligibility: Mastercard Foundation Associates are selected from young leaders who have completed tertiary education through the Mastercard Foundation Scholars Program or other Mastercard Foundation-supported initiatives under the Education and Transitions platform. This includes Mastercard Foundation Scholars who began at the secondary level and continued through tertiary education, as well as graduates of country-level programs such as Corps Africa Volunteers, supported by the Mastercard Foundation.

Why become a Mastercard Foundation Associate?

"The Mastercard Foundation Associates Program provided me with an opportunity to work with a corporate organization and collaborate with a team of professionals and intelligent individuals, broadening my dreams and horizons. I gained valuable skills such as e-learning development, LMS administration, user engagement management, data extraction, and data visualization. These skills have inspired me to pursue my dream of owning my own company and becoming an employer."

Ahmad Umar, LEAP Africa

See accompanying [Associates Program Video](#).





## II. AFRICA CAREERS NETWORK (ACN)

This is an initiative dedicated to transforming the lives of African youth through a foundational leadership experience by bridging the gap between job seekers and employers. Its mission is to accelerate the career pathways of young leaders equipped to address Africa's grand challenges in critical sectors such as agribusiness, education, healthcare, governance, infrastructure, and the arts. The aim is not only to help these young leaders secure dignified early-career opportunities but also to empower them to build sector-focused networks that spark collective impact, deepen interest, and open new horizons.

ACN delivers on this mission through three key pathways:

- **Professional Development:** enhancing professional and soft skills to prepare youth for the workplace.
- **Matching and Placement:** connecting young talent to meaningful job opportunities.
- **Networking Opportunities:** fostering connections with mentors, peers, and industry partners to support long-term career growth.

ACN delivers this experience by working with different affiliates across the African continent which include:

- [Academic Success](#)
- [Konexio](#)
- [Education needs all](#)
- [The Afara initiative](#)
- [Education Matters](#)
- [One World Benin](#)
- [Carifika Network](#)
- [Restless Development Uganda](#)
- [Shasha Network](#)

### III. AFRICA CAREERS NETWORK AMBASSADOR PROGRAM: A CAREER PORTAL CONNECTING TALENT TO OPPORTUNITIES ACROSS AFRICA

This is a voluntary Ambassador Program aimed at recruiting 50 passionate and high-potential African Mastercard Foundation Scholars and Alumni volunteers. An African Careers Network Ambassador will have the opportunity to engage with students on campuses and in communities, organizing events, and contributing to African Careers Network's initiatives, thereby fostering a community of support and growth.

[Click here to learn more.](#)

### IV. MASTERCARD FOUNDATION SCHOLAR CORPS

Mastercard Foundation Scholar Corps is a bold new initiative by the Mastercard Foundation to reconnect with and support Mastercard Foundation Scholars Program Alumni across Africa. This network of trained Mastercard Foundation Scholars Program leaders will serve as local champions, helping young people navigate their journeys toward dignified and fulfilling work. Their mission includes locating Mastercard Foundation Scholars Program Alumni through digital platforms and peer networks, coaching them through job readiness and career development.

The program will recruit 120 Mastercard Foundation Scholars Program Alumni into full-time, two-year roles, along with 10 Mastercard Foundation Scholar supervisors, to form the inaugural Mastercard Foundation Scholar Corps. Once selected, Mastercard Foundation Scholar Corps members will undergo comprehensive training facilitated by [Life Hikes](#), equipping them with skills in career coaching, peer facilitation, and a deep understanding of the Mastercard Foundation's programs.

Click [here](#) to apply.





## PILLAR 2:

# ENTREPRENEURSHIP SUPPORT



The Mastercard Foundation champions entrepreneurship as a viable and impactful career pathway for young people like you. The Entrepreneurship pillar allows Mastercard Foundation Scholars Program Alumni who wish to launch their own businesses by providing early-stage capital and support. These programs aim to provide aspiring young African entrepreneurs with the experience and skills needed to create thriving start-ups and create jobs for others on the continent.

Please note that entrepreneurship support is offered on a competitive basis through Mastercard Foundation partner institutions and is typically one-time seed funding. As your business grows, you will be encouraged and supported to seek alternative sources of financing and support. Mastercard Foundation Scholars and Alumni are also encouraged to explore other opportunities within their universities and beyond. Your own initiative and agency are key to sustaining and growing your entrepreneurial journey. Mastercard Foundation Scholars and Alumni with a passion for building enterprises that solve local problems can access funding, mentorship, and technical support through the following initiatives:

## 1. Mastercard Foundation Scholars Entrepreneurship Fund (SEF) 2.0:

Funding (up to \$5,000 per venture), training, and mentorship for current Mastercard Foundation Scholars.

The SEF 2.0 aims to provide Mastercard Foundation Scholars with seed funding and support to help them build impactful, youth-led ventures across Africa. The Mastercard Foundation Scholars Program partners will implement the fund and provide support to their respective Mastercard Foundation Scholars. Also, it will also provide funding to partners to optimize and scale entrepreneurial programs that support Mastercard Foundation Scholars and student-led ventures. The SEF 2.0 is only open to Mastercard Foundation Scholars currently enrolled at partner universities.

Please direct all enquiries related to SEF 2.0 to the Program Manager at your institution.

## 2. Fund for Alumni Start-ups in Transition (FAST):

Funding (up to \$15,000 per venture), training, and mentorship for Mastercard Foundation Scholars Program Alumni. The Mastercard Foundation FAST program will support and empower the next generation of entrepreneurs by providing up to \$15,000 in funding support for each venture.

The program, open to aspiring entrepreneurs or those in the early stages of their entrepreneurship journey, offers Mastercard Foundation Scholars Program Alumni from the Young African Leaders Initiative (YALI), African Leadership Academy (ALA), Anzisha Prize, and the Mastercard Foundation Scholars Program a unique opportunity to gain access to funding, business development training, and a supportive network of like-minded entrepreneurs and mentors.

The Mastercard Foundation FAST program will provide support in two key stages to assist entrepreneurs at different points in their journey.



## PLEASE NOTE

To receive funding, you must apply and meet the eligibility requirements. The funding is provided through your institution and is awarded only once. If you require additional funding to further develop your venture beyond the initial offer, you are encouraged to explore other funding sources.

Please visit the [Baobab platform](#) to apply.

The Mastercard Foundation Scholars Program is committed to supporting your journey currently as a Mastercard Foundation Scholar and later as a Mastercard Foundation Scholars Program Alumni as you navigate the journey from education to dignified and fulfilling work. It offers holistic transition services such as academic guidance, career development, entrepreneurship support, and workforce placements.

## LEARN MORE

The support from the Mastercard Foundation is one of many ways to assist you in transitioning to dignified work or entrepreneurship. However, this support may not be sufficient on its own. Therefore, it is important to be curious and explore additional resources. Your institution of study, for instance, will also have dedicated careers support. Please reach out to the Transitions team at your institution of study to learn about the support available to your post graduation. You shouldn't stop there; explore other sources to maximize your opportunities.



# COMMUNITY, NETWORKING, AND MASTERCARD FOUNDATION SCHOLARS PROGRAM ALUMNI ENGAGEMENT

## BUILDING AND SUSTAINING NETWORKS

The Mastercard Foundation Scholars Program provides multiple platforms and touchpoints for Mastercard Foundation Scholars to build lasting relationships with peers, mentors, and Mastercard Foundation Scholars Program Alumni. These networks support personal growth, leadership development, and career advancement, while also amplifying Mastercard Foundation Scholars' collective impact. The networks also help distribute regular surveys to capture feedback.

## ABOUT THE MASTERCARD FOUNDATION ALUMNI NETWORK

Upon graduation, Mastercard Foundation Scholars transition into a dynamic and growing [Mastercard Foundation Alumni Network](#), structured to maintain connections, support professional journeys, and champion the values of the Mastercard Foundation in diverse contexts. The network is rooted in regional collaboration and peer-led leadership.

Click the [link here](#) to explore our country chapters and discover how to get involved.



## HOW TO GET INVOLVED

- **The Mastercard Foundation Scholars Council:** A representative body of Mastercard Foundation Scholars and Alumni that contributes insights and helps shape the direction of the Mastercard Foundation Scholars Program through advocacy, feedback, and peer engagement. It is made up of active Mastercard Foundation Scholar leaders from all institutions across the Partner Network. The Mastercard Foundation Scholars Council is encouraged to work closely with the Mastercard Foundation Alumni Network bodies.
- **The Baobab Summit:** The Baobab Summit is an annual leadership conference focused on transformative leadership where Mastercard Foundation Scholars gather to network, innovate and develop their ideas to drive positive change in their communities. Each of our partners chooses Mastercard Foundation Scholars to attend the Baobab Summit based on their own selection processes, which have included essay-writing contests, a random draw, highest grades, most community giveback participation, through a Mastercard Foundation Scholar selection committee, etc. We expect your host institution to provide you with information about the opportunity and the selection process.

Mastercard Foundation Scholars Council members are invited to participate every year. Mastercard Foundation Scholars who have the opportunity to participate in the Baobab Summit are encouraged to share their learning and insight from the event with their peers on campus.

- **The Baobab Platform:** The Baobab platform ([baobabplatform.org](http://baobabplatform.org)) is an online platform that will enable you to connect with the Mastercard Foundation Alumni community. A few of the features that the platform provides are career guidance, mentors, leadership training, and a variety of opportunities. Use it as a space to connect, share ideas and resources, discuss topics that are important to you, and offer one another support and advice. Baobab provides you with a means to continue learning, stay connected, and collaborate with one another for many years beyond your formal education.

## BUILDING MASTERCARD FOUNDATION SCHOLARS PROGRAM ALUMNI COMMUNITIES AND IMPACT NETWORKS (BAC-IN) PROGRAM

The BAC-IN program is dedicated to bolstering the capacity of partner universities across sub-Saharan Africa in developing and enhancing their Mastercard Foundation Scholars Program Alumni networks. Click [here](#) to learn more.

## MASTERCARD FOUNDATION ALUMNI NETWORK CHAPTERS

Mastercard Foundation Alumni chapters are a vibrant, youth-led network that connects Mastercard Foundation Alumni across vibrant youth-led networks to drive social and economic transformation in their communities. Through elected leadership committees, the Network provides strategic direction, fosters inclusive engagement, and amplifies Mastercard Foundation Alumni voices in Mastercard Foundation programming. It supports the Young Africa Works strategy by cultivating a strong sense of community, peer support, and shared purpose.

It may seem far away, but once you have completed your studies through the Mastercard Foundation Scholars Program, you are a part of the community for life. There are Mastercard Foundation Scholars who are living and working around the globe contributing to the positive development of their communities, countries, and the continent. Through our Mastercard Foundation Alumni programming, you will continue to be able to connect with other Mastercard Foundation Scholars, mentors, opportunities, and the Mastercard Foundation. Please make sure to check out the [Baobab platform](#) and the [Mastercard Foundation Alumni](#) page to continue to find information on how to connect.

For more information about the Mastercard Foundation Alumni Network, including how to join your local chapter, participate in Mastercard Foundation Alumni initiatives, or reconnect with Mastercard Foundation Scholars, you are encouraged to reach out to the Mastercard Foundation Alumni team. They can provide guidance on engagement opportunities, upcoming events, and resources tailored for Mastercard Foundation Alumni across regions. [Join your local chapter.](#)

Contact the team at [alumni@mastercardfdn.org](mailto:alumni@mastercardfdn.org) to stay informed and connected.

## ABOUT THE MASTERCARD FOUNDATION ALUMNI NETWORK

The Mastercard Foundation Alumni Network is the culmination of our vision to mobilize the Mastercard Foundation Scholars Program Alumni from all our Mastercard Foundations Scholars Programs. In time the network will expand to include the other countries where the Mastercard Foundation Alumni Network is implementing its Young Africa Works strategy connecting Mastercard Foundation Scholars Program Alumni to each other, resources, opportunities, and mentors.

## MASTERCARD FOUNDATION ALUMNI NETWORK STRUCTURE

### COUNTRY CHAPTERS

The Mastercard Foundation Alumni Network spans a wide geographical footprint, ensuring that Mastercard Foundation Scholars Program Alumni remain connected and engaged, regardless of their location. The network is strategically structured to promote regional collaboration and foster a sense of belonging among Mastercard Foundation Scholars Program Alumni across diverse cultural, economic, and social contexts.

Country and Regional Chapters are established in Kenya, Uganda, Rwanda, Nigeria, Ghana, WAEMU\* (West African Economic and Monetary Union), and North America, creating vibrant hubs for resident local Mastercard Foundation Scholars Program Alumni to engage with each other, share insights, and collaborate on impactful projects. These chapters organise regular events, professional development activities, and community outreach initiatives that cater to the specific needs and opportunities of each region. Click [here](#) to read more.

\*WAEMU (Senegal, Ivory Coast, Benin, Togo, Burkina Faso)





## MANAGEMENT INFORMATION SYSTEM (MIS)

The Management Information System (MIS) is used to manage individual-level data for the Mastercard Foundation Scholars Program. Both Mastercard Foundation staff and implementing partners use this system to enhance Mastercard Foundation Scholars Program offerings and improve engagement. The data collected is kept in strict confidentiality in linewith our [privacy policy](#).

Collecting individual data from Mastercard Foundation Scholars is vital for understanding their progress through the Mastercard Foundation Scholars Program, the reasons behind any premature exits, and their transition plans. This information helps us improve the core Mastercard Foundation Scholars program, design new programs that better support participants, and maintain engagement through surveys and impact stories.

Additionally, the MIS helps us meet our reporting obligations to the board and ensures transparency regarding our data collection practices. This strengthens the Mastercard Foundation Scholars Program Alumni Network, as well as the Mastercard Foundation Scholars and Alumni communities. The system is employed by both Mastercard Foundation staff and implementing partners.

## THE DATA WE COLLECT INCLUDES:

- Demographics
- Progress through programs
- Contact information
- We also collect data through bi-annual surveys and tracer studies

We are committed to safeguarding personal information at every step of the data process, valuing both their privacy and the importance of their data. We adhere to a Privacy by Design approach, embedding privacy-enhancing features in our systems and processes.

● **Lawfulness and Informed Consent:**  
We collect this data with informed consent, ensuring it is done lawfully (directly or through our partners).

● **Fairness and transparency:**  
Mastercard Foundation Scholars have the right to know why their data is being collected and how it will be used. We strive to communicate this clearly at every opportunity - directly with the Mastercard Foundation Scholars through onboarding sessions or through our partners.

● **Integrity and Security:**  
We employ measures to protect data from unauthorized access, using multi-factor authentication and robust password protocols to ensure accuracy and confidentiality.

● **Purpose Limitation:**  
Data is collected solely to improve the Mastercard Foundation Scholars Program and support their studies and transitions.

● **Proportionality and Data Minimization:**  
We only gather the data necessary to fulfil these purposes.

● **Storage Limitation:**  
Data will be retained as long as necessary and securely deleted thereafter.

● **Accountability:**  
We maintain documentation and take responsibility for safeguarding personal information.

## INFORMED CONSENT AND DATA SUBJECT RIGHTS

Informed consent is the most important part of our data practices. We want to ensure participants are fully aware of what data we are collecting and why. Consent should always be obtained voluntarily and can be withdrawn at any time.

### INFORMED CONSENT

- **Disclosure:** Individuals are informed about the data being collected.
- **Understanding:** Information is clear, and accessible.
- **Voluntariness:** Consent is given freely.
- **Competence:** Individuals can make informed decisions about their data
- **Documentation:** Consent is recorded, documented and verifiable.

### THE SUBJECT RIGHTS ARE:

- The right to be informed
- The right to access – individuals can request their personal data
- The right to rectification
- The right related to automated processing
- The right to erasure (also known as the right to be forgotten)
- The right to restrict processing
- The right to object



# MASTERCARD FOUNDATION BRAND GUIDELINES

As a Mastercard Foundation Scholar, you are part of a global community whose stories, leadership, and impact reflect the mission and values of the Mastercard Foundation.

Every time you speak about the Mastercard Foundation Scholars Program, publish your work, develop presentations, or share your journey publicly, you help shape how the Mastercard Foundation is understood around the world.

This guidance will help you represent the Mastercard Foundation clearly, accurately, and confidently.

## YOUR ROLE AS A MASTERCARD FOUNDATION BRAND AMBASSADOR

As a Mastercard Foundation Scholar, you are an ambassador of the Mastercard Foundation's values and impact.

You represent the Mastercard Foundation when you:

●	Share your Mastercard Foundation Scholar journey
●	Speak at events and conferences
●	Publish research or thought leadership
●	Engage on social media
●	Lead community initiatives

Your voice helps inspire other young people and demonstrates what transformative leadership looks like in action.

## HOW TO REFERENCE THE MASTERCARD FOUNDATION

●	We are Mastercard Foundation
●	<b>Not</b> Mastercard <b>not</b> Master card <b>not</b> MCF
●	The letters 'M' and 'F' must always be uppercase when referring to the Mastercard Foundation

●	The letter 'c' is always in lowercase when referring to Mastercard Foundation.
●	The word 'The' is not part of the Mastercard Foundation name. However, if beginning a sentence, the 'T' in the word 'The' would be uppercase and if it appears in the middle of a sentence, the 'T' in the word 'The' would not be in uppercase
●	For instance: " <b><i>The Mastercard Foundation is working in partnership with...</i></b> "

## HOW TO REFERENCE THE MASTERCARD FOUNDATION SCHOLARS PROGRAM

●	Mastercard Foundation Scholars Program in all instances
●	<b>Not</b> Scholars Program <b>not</b> MCFSP <b>not</b> SP <b>not</b> Mastercard Foundation Scholarship Program
●	[Patrice Uwase Mavubi] is a Mastercard Foundation Scholar at [University of California, Berkeley]
●	In partnership with, in collaboration with, Together with,
●	Mastercard Foundation Scholars/Mastercard Foundation Scholars Program Alumni
●	Always use uppercase "S" and "A" when referring to Mastercard Foundation Scholars and Mastercard Foundation Scholars Program Alumni

## SOCIAL MEDIA AND DIGITAL ENGAGEMENT

Mastercard Foundation Scholars are encouraged to share their journeys and impact online. When posting:

●	Use the correct Mastercard Foundation and Program names
●	Tag official platforms where relevant
●	Avoid using the Mastercard Foundation logo on personal graphics without approval
●	Ensure posts reflect the values of the Mastercard Foundation

Your digital presence contributes to a collective global narrative.

## LIVING THE BRAND

Beyond visuals and communications, the Mastercard Foundation brand is expressed through how Mastercard Foundation Scholars lead and serve.

You bring the brand to life when you:

●	Lead with humility and respect
●	Champion inclusion and equity
●	Collaborate across cultures
●	Act with integrity
●	Create meaningful community impact

Your actions are the most powerful representation of the Mastercard Foundation's mission.

Mastercard Foundation Scholars are always encouraged to consult their institutional program teams when developing materials that require brand alignment.

**FREQUENTLY ASKED  
QUESTIONS**



For more information please visit our [website](#).



## CONCLUSION AND WAY FORWARD

As a Mastercard Foundation Scholar, you are joining a powerful network of young changemakers committed to advancing inclusive and equitable transformation in Africa. Throughout this handbook, we've explored the tools, programs, and principles that guide your journey, from community service and wellbeing support to entrepreneurship and Mastercard Foundation Scholars Program Alumni engagement.

This is more than a scholarship. It's a calling to be part of something greater. A reminder that your journey can uplift others, transform communities, and help shape a brighter future for the continent.

## CALL TO ACTION: LEAD THE WAY

As a Mastercard Foundation Scholar, you are not just a participant, you are an ambassador. Here's how you can bring our values to life and carry the mission forward.

### USE YOUR VOICE FOR GOOD

#### SHARE YOUR EXPERIENCE

Your story matters. Speak about your journey, the opportunities you've accessed, and how the Mastercard Foundation Scholars Program has shaped your life. Help others by sharing application tips and lessons learned.

#### COMMUNITY OUTREACH

Reconnect with your roots. Visit your community, school, or local youth groups to raise awareness about the Mastercard Foundation Scholars Program and inspire others to dream big.

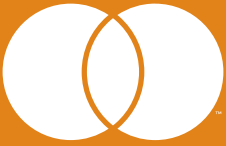
### TRANSFORMATIVE LEADERSHIP IN ACTION

- **Lead Through Service:** Leadership is not about position, it's about purpose. Use your education, experience, and voice to drive meaningful change in your community.
- **Initiate Impact Projects:** Start or support give-back initiatives that respond to real challenges and promote sustainable impact.
- **Engage with the Network:** Join the Baobab platform. Participate in the Baobab Summits. Apply for the Mastercard Foundation Scholars Council at your school. Every step strengthens the movement we are building together.

# LOOKING AHEAD

The Mastercard Foundation envisions a world where all young people are included and able to realize their full potential. By 2030, we aim to enable 30 million young people in Africa and 100,000 Indigenous youth in Canada, especially young women to secure dignified and fulfilling work.

As a Mastercard Foundation Scholar, you are central to this vision. Your leadership, courage, and compassion are not only transforming your own life but also shaping the future of Africa.



mastercard  
foundation

🌐 [mastercardfdn.org](https://www.mastercardfdn.org)

📘 [facebook.com/MastercardFoundation](https://www.facebook.com/MastercardFoundation)

✂️ [x.com/MastercardFdn](https://x.com/MastercardFdn)

🌐 [linkedin.com/company/the-mastercard-foundation](https://www.linkedin.com/company/the-mastercard-foundation)