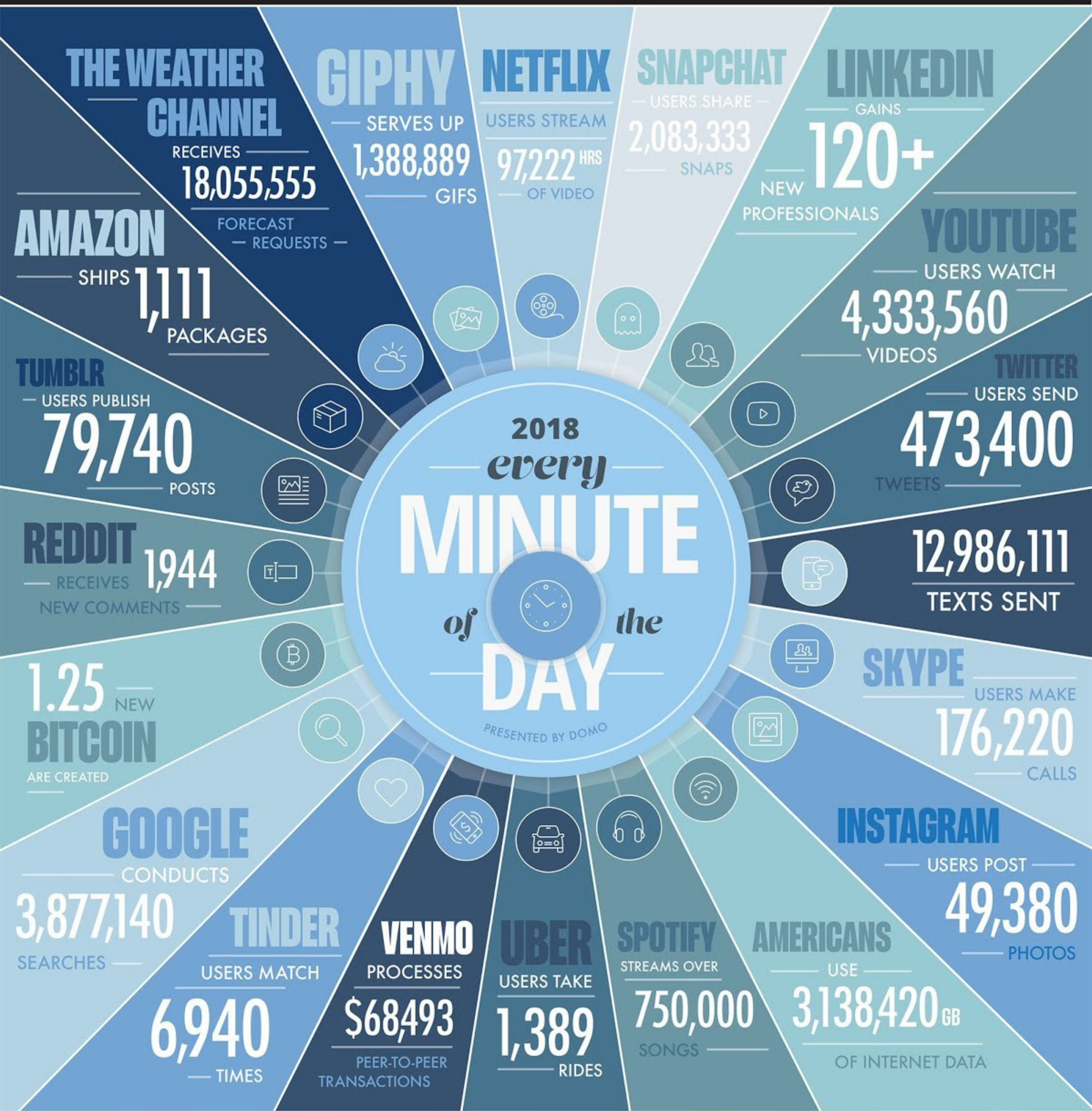


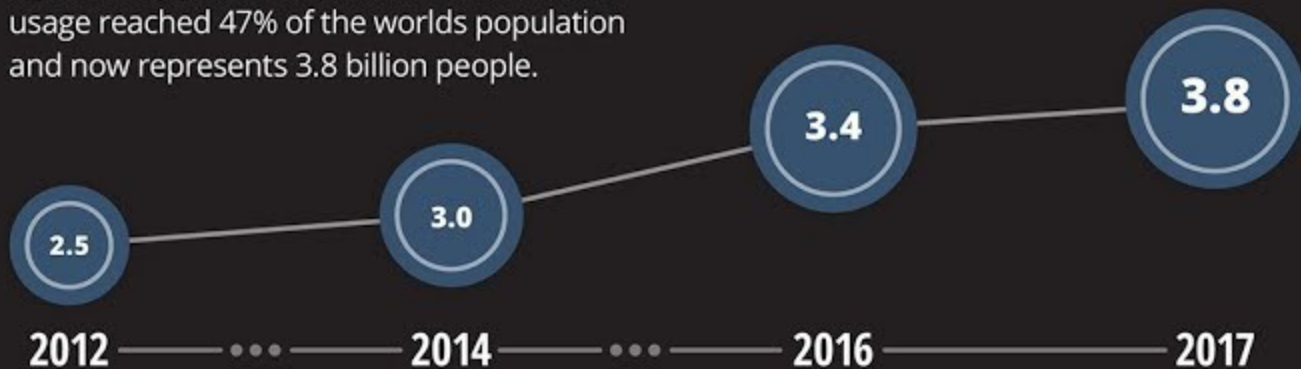
DATA NEVER SLEEPS 6.0

How much data is generated *every minute*?

There's no way around it: big data just keeps getting bigger. The numbers are staggering, but they're not slowing down. By 2020, it's estimated that for every person on earth, 1.7 MB of data will be created every second. In our 6th edition of Data Never Sleeps, we once again take a look at how much data is being created all around us every single minute of the day—and we have a feeling things are just getting started.



The world's internet population is growing significantly year-over-year. In 2017, internet usage reached 47% of the world's population and now represents 3.8 billion people.



GLOBAL INTERNET POPULATION GROWTH 2012-2017 (IN BILLIONS)

The ability to make data-driven decisions is crucial to any business. With each click, swipe, share, and like, a world of valuable information is created. Domo puts the power to make those decisions right into the palm of your hand by connecting your data and your people at any moment, on any device, so they can make the kind of decisions that make an impact.

Learn more at domo.com