

A modern, dimly lit hallway with a curved ceiling and walls. The ceiling has several horizontal light fixtures. In the center, there is a turnstile. Two men in suits are standing near the turnstile, and two women are walking past it. The overall atmosphere is professional and sophisticated.

# THE FORUM

POWERED BY **HUCKLETREE**

# Designed for Impact.

## *Perfectly Placed in the City.*

When your event demands the very best, there's only one address that delivers. In the heart of the City of London, at 40 Leadenhall, The Forum powered by Huckletree has been created with a single purpose: to host exceptional business events.

This purpose-built, boutique venue occupies one of London's most prestigious addresses, offering the perfect backdrop for high-profile gatherings that call for both impact and discretion.

With a state-of-the-art auditorium for up to 200 guests, a light-filled lounge ideal for networking and receptions, a private green room, and an exclusive-use reception, The Forum brings every element together in one seamless, premium setting.

Whether you're hosting a leadership summit, a client showcase, or an industry-defining event, The Forum combines exclusivity, flexibility, and flawless design.

*Your extraordinary event. Our extraordinary venue.*



A modern, multi-level atrium with a central bar, lounge seating, and large indoor trees. The space is characterized by its high ceilings, brick walls, and large glass windows. The central area features a curved bar with a blue base and a glass top, surrounded by high-top stools. In the foreground, there is a lounge area with several dark-colored armchairs and small round tables. Two large, leafy indoor trees are positioned in the middle ground. The background shows a staircase with a metal railing and a glass-enclosed upper level. The overall atmosphere is bright and contemporary.

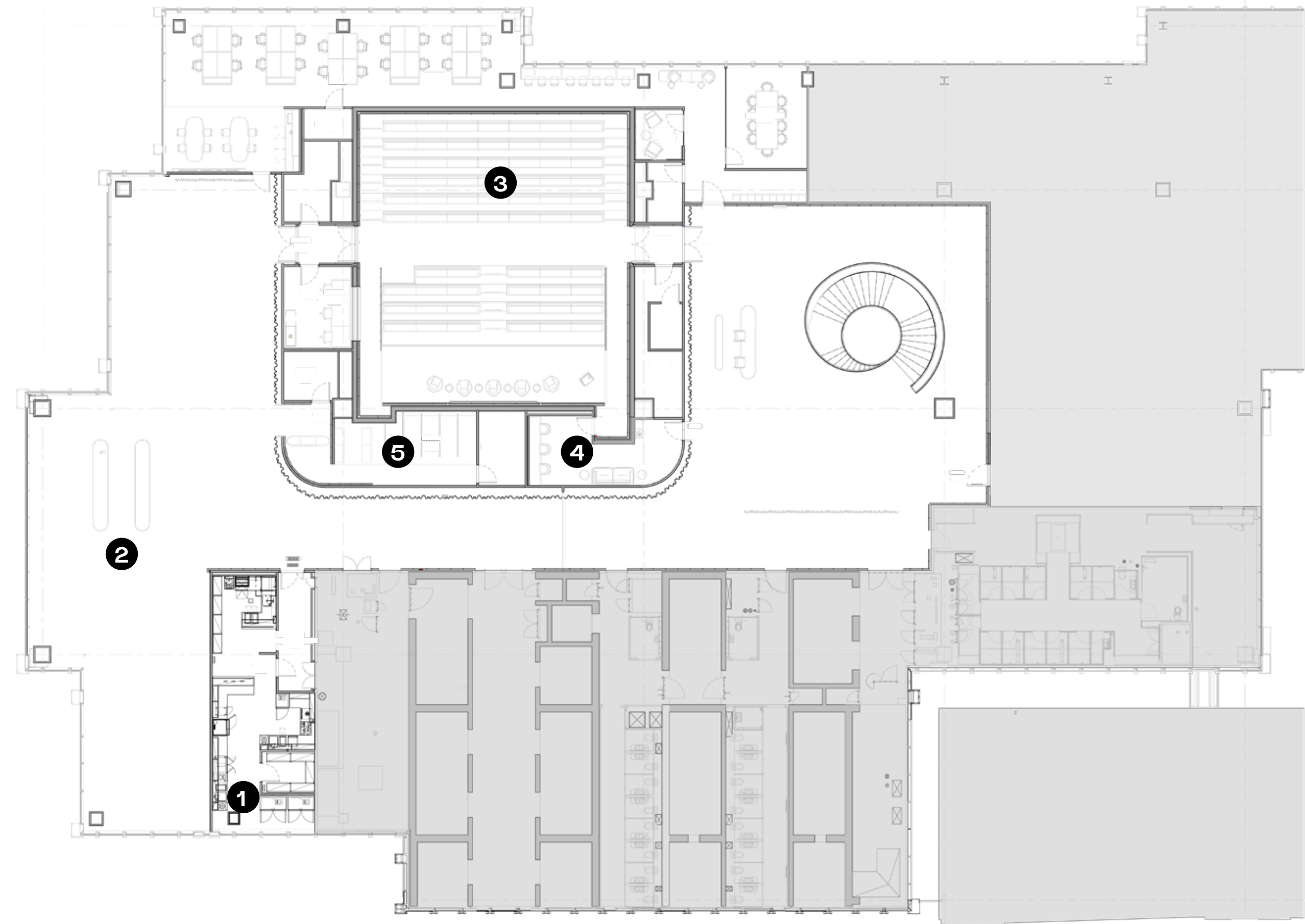
A Premium Event Experience,  
All on One Floor

# The Venue

More than a state-of-the-art auditorium, The Forum is a fully private venue designed to host business events seamlessly from start to finish. From the moment your guests arrive, a dedicated reception ensures a smooth welcome and a professional first impression.

The light-filled, spacious lounge creates a natural hub for networking, breakout conversations, or informal gatherings, seamlessly complementing the main auditorium. Designed to transition effortlessly from daytime conference to evening reception, it's the perfect setting to close your event with cocktails and conversation.

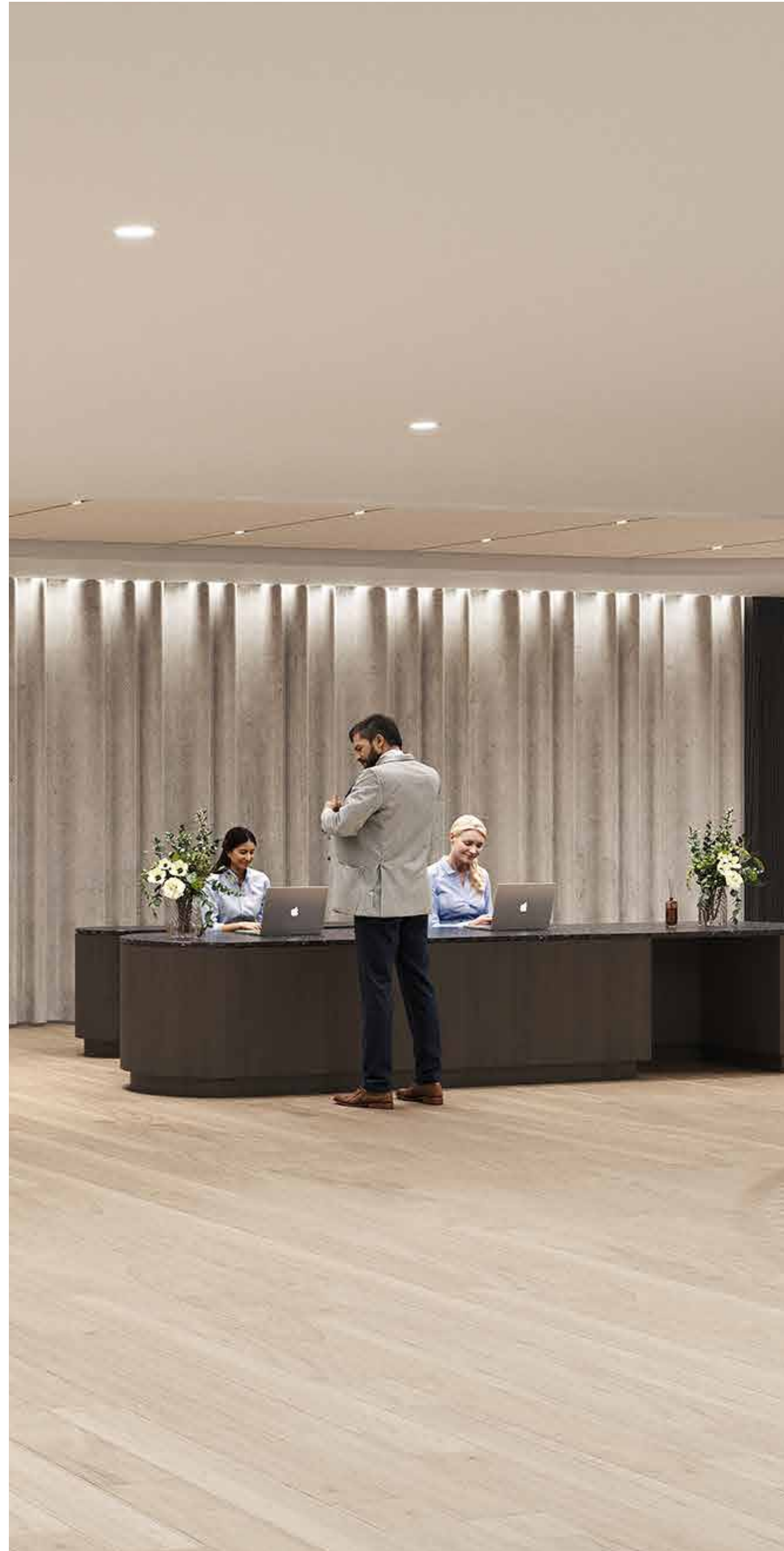
- ❶ Event Space Kitchen
- ❷ Event Space/Bar Area
- ❸ Auditorium (200 person capacity)
- ❹ Green room
- ❺ Coat storage







# Where Presentations Take Centre Stage



# Technical specifications

## IMMERSIVE VISUAL EXPERIENCE

### 205” 21:9 LED Video Wall

---

Ultra-wide, cinema-style screen with 4K resolution (3840x1620) for stunning presentations, videos, and live content.

### Flexible Content Layouts

---

Switch effortlessly between presentation modes, panel discussions, and multi-speaker layouts.

### Perfect for Hybrid Events

---

Optimised for Microsoft Teams Front Row, Zoom, Google Meet, Webex, and more.

## CRYSTAL-CLEAR AUDIO

### Beam-Steering FOH Speaker System

---

Tailored acoustic performance for perfect sound in every seat.

### 20 Ceiling Speakers

---

Superior coverage and clarity across the room.

### Wireless Microphones

---

Handheld, lapel, and lectern options (fully encrypted for security).

### Assistive Listening System

---

Ensuring an inclusive experience for all attendees.

## PROFESSIONAL-GRADE VIDEO & STREAMING

### 4× 4K PTZ Cameras

---

Two stage-facing and two audience-facing cameras capture every angle.

### AI-Powered Camera Automation

---

Smart speaker tracking and scene switching – no operator needed.

### Live Web Streaming

---

Broadcast your event to remote audiences anywhere.

### High-Quality Recording

---

Capture video and audio for on-demand viewing or internal distribution.

## AUDIENCE ENGAGEMENT & INTERACTIVITY

### Integrated Participation Tools

---

Live polling, Q&A texting, attendee notifications.

### Personal Mic Access

---

Guests can contribute via their own devices.

### Control Room Management

---

Everything is centrally managed by our technical team for a smooth experience.

## FLEXIBLE CONNECTIVITY & STAGE SETUP

### Multiple AV Floor Boxes

---

Support for a variety of stage layouts and equipment setups.

### Presentation PCs & Networked AV Points

---

Easily connect laptops or external devices.



## DIGITAL SIGNAGE & BACKGROUND MUSIC

### Pre-Function Displays

---

65" UHD screens for welcome messages, branding, and event schedules.

### Customisable Background Music

---

Curated playlists to set the right mood before and after your event.

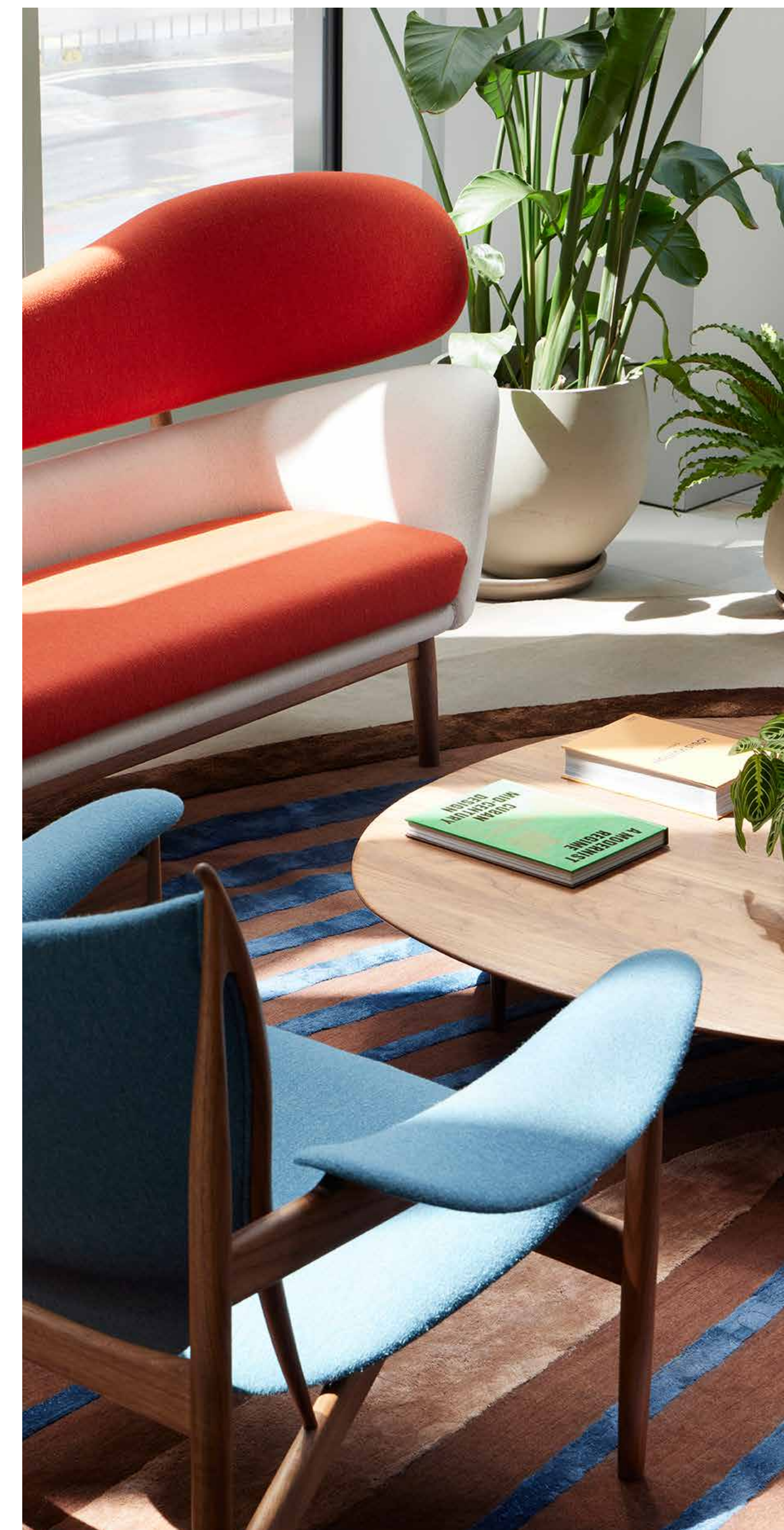
## DEDICATED AV CONTROL ROOM

### A fully equipped control room supports professional live production with separate

---

- Vision mixing & camera control
- Audio mixing
- Content and presentation management

Our in-house technical team is available to ensure flawless execution from start to finish.





## Venue Hire Rates

Whether you're planning a half-day, full-day, or evening event, The Forum offers flexible hire options alongside all-inclusive catering packages designed to make hosting effortless.

### VENUE HIRE RATES

From **£7,500** + VAT

### ALL-INCLUSIVE PACKAGES

From **£89** + VAT for half day events

## Delegate Packages

Our delegate packages are designed to keep planning simple and seamless. Each package includes exclusive venue hire and gourmet catering, offering excellent value with complete peace of mind.

Choose from full-day, half-day, or evening options, with menus thoughtfully curated by our trusted catering partners. Catering is served in our event spaces and in the elegant Lounge adjoining the Auditorium, creating a welcoming setting for your guests.

Our experienced events team will be delighted to share the latest package details and work with you to tailor them to your needs.



# Your Hire Includes:

Our dedicated events team will be delighted to guide you through our packages and ensure every detail is perfectly planned.

## **Technical Support:**

---

Dedicated AV technician to run sound and visuals.

## **Visuals:**

---

205” LED Video Wall (21:9 aspect ratio).

## **Professional Capture:**

---

Four 4K PTZ cameras (2 stage-facing, 2 audience-facing)

## **Presenter-Friendly**

---

Two comfort monitors & lectern.

## **Smart Camera Automation**

---

AI-powered speaker tracking and scene switching – no operator needed.

## **Seamless Sound**

---

Two wireless microphones (handheld or lapel).

## **Guest Experience**

---

Pre-function 65” UHD screens for branding, welcome messages & agendas.

## **Green Room**

---

Private space with a live feed from the Auditorium.

## **Background Music**

---

Customisable playlists before and after your event.

A circular lounge area with a dark wood bookshelf, a round coffee table, and several armchairs. The room features a curved wall with built-in bookshelves filled with books and decorative vases. In the center, there is a round wooden coffee table with a few bottles on it, surrounded by six modern wooden armchairs with light-colored cushions. The floor is a light color, and the ceiling is white with recessed lighting. The overall atmosphere is sophisticated and modern.

# Additional Services

---

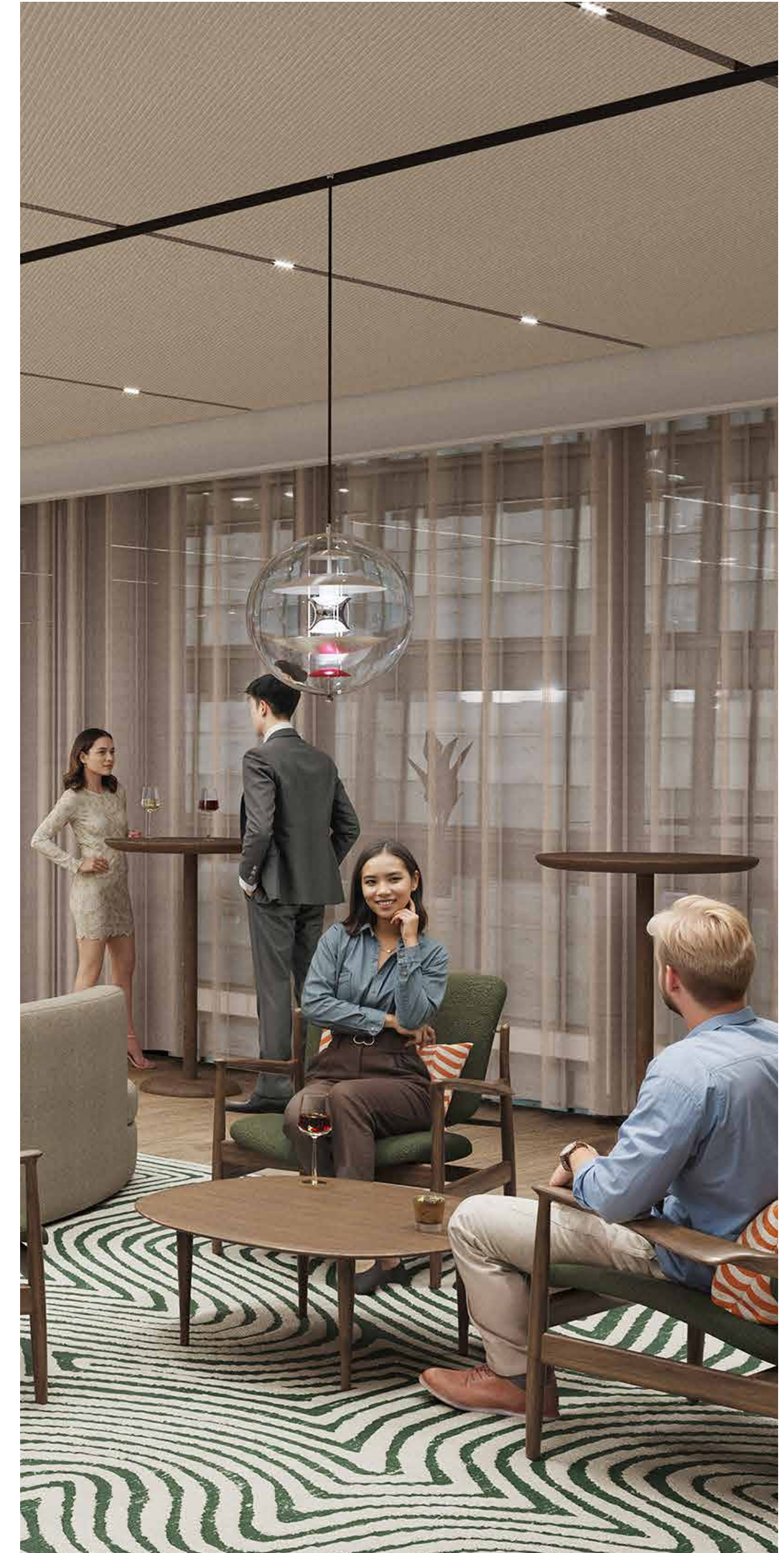
## Our event services team can help transform The Forum into a uniquely branded experience.

From creative stage design to personalised signage and digital branding opportunities, every detail can be tailored to reflect your organisation's identity.

Enhance your programme with live entertainment or bespoke add-ons, we work with trusted partners to create memorable moments that leave a lasting impression.

The Forum's private green room provides a comfortable, discreet retreat for speakers and VIP guests. Whether preparing for a keynote, taking confidential calls, or simply pausing between sessions, the space is designed with convenience in mind.

Professional makeup and hairstyling services can also be arranged on request, ensuring your speakers feel confident and event-ready.



## Get in contact

**Discover a venue designed exclusively for conferences and business events, accommodating up to 200 guests in the City of London.**

If you're ready to host an event that makes a lasting impact, our team would love to hear from you. We're here to arrange a private tour of The Forum or answer any questions about tailoring the space to your needs.

### Enquiries

✉ [ainara@huckletree.com](mailto:ainara@huckletree.com)

☎ 07827270005

### Address

40 Leadenhall St,  
London  
EC3M 2RY

### Transport Links

Monument station - 5 min walk  
Bank station - 8 min walk  
Liverpool Street station - 8 min walk  
Fenchurch station - 4 min walk  
Aldgate station - 5 min walk

### Find us online

[www.huckletree.com](http://www.huckletree.com)  
[@huckletree](https://www.instagram.com/huckletree)  
[memberships@huckletree.com](mailto:memberships@huckletree.com)



A photograph of a modern building courtyard. The scene is filled with lush green trees and plants. In the center, two men in business attire are walking towards the camera. The background features a large glass-walled building with a brick facade on the right. The overall atmosphere is professional and sophisticated.

# THE FORUM

POWERED BY **HUCKLETREE**

Where business events meet purpose, style, and precision.